

---

# SPORT AIR RACING LEAGUE!

## PAPPY BOYINGTON MEMORIAL CUP

### COEUR D'ALENE, IDAHO

AUGUST 18, 2012

WELCOME!

#### FRIDAY, AUGUST 17 ARRIVAL DAY

1:00 PM to 5:00 PM Registration, Cash/Check only no credit cards please.

- Entry fee is \$30 for SARL members and \$40 for non members.
- Southfield Fuel will have a discount at the pump for the weekend for racers and fly in airplanes.
- For ground transportation call Brent or Kristi Travis at 208-691-7472 or 208-691-7473. We will make at least one GMC Suburban available to race pilots as a courtesy car. There may be other shuttle options as well to the hotel/motel/restaurant.

5:00 PM to 8:00 PM Meet and greet at Brent's hangar. We will barbecue and have a good time.

#### SATURDAY, AUGUST 18, RACE DAY!

6:30 AM - 8:30 AM: Pancake Breakfast at the airport (On your own nickle.)

7:00 AM – 8:30 AM: Registration/Sign in closing at 8:30 AM (No Credit Cards!)

9:00 AM Mandatory Pilot's Race Briefing – Brent's Hangar.

10:30 AM First racer takes off.

After the race results will be announced ASAP

12:30 – 1:30 PM Lunch provided

---

## DEPARTURE

### BLUE SKIES AND TAILWINDS!

## Route and Turn Points

This will be a 150 statute mile (130 nm) open course consisting of twelve turns over the beautiful Northern Idaho terrain. Some of the course is mountainous and will require planning to navigate. Altitude required to complete this race will vary. Pay attention to radio calls and minimum altitude requirements in the pre-race briefing.

Race organizers reserve the right to make changes to the race course. Pre-race briefing is **MANDATORY**. If you are not briefed you will not participate.

Start	Coeur d'Alene Airport	Heading	Distance	Minimum	Frequency
Turn 1	Manufacturing Plant	243	6.6	2800	122.8
Turn 2	Farm	175	14.4		122.9
Turn 3	Tekoa (Willard) Airport	166	17.3		122.9
Turn 4	Grain Silos	113	5.5		122.9
Turn 5	Maintenance Building	11	11		122.9
Turn 6	Carlin Bay Airport	355	12.7		122.9
Turn 7	West end I-90 Bridge	22	6		122.9
Turn 8	Hayden Lake	327	6.6		122.9
Turn 9	Spades Mountain Lookout	45	7.6		122.9
Turn 10	Water Tower	337	9.9		122.9
Turn 11	Treeport Airport	263	7.9		122.9
Turn 12	Recycle Plant	195	15.1		122.9
Finish	Coeur d'Alene Airport	67	6.6		122.8
			127.2	NM	

	Name	Latitude	Longitude	Elevation, MSL	Latitude	Longitude
Turn 1	Manufacturing Plant	47°45'34.60"N	116°58'50.19"W	2125	47° 45.577'N	116° 58.837'W
Turn 2	Farm	47°31'20.26"N	117° 2'25.51"W	2566	47° 31.338'N	117° 2.425'W
Turn 3	Willard Airport	47°14'2.31"N	117° 2'51.48"W	2520	47° 14.039'N	117° 2.858'W
Turn 4	Grain Elevator	47°10'37.70"N	116°56'31.89"W	2564	47° 10.628'N	116° 56.532'W
Turn 5	Maintenance Building	47°20'25.73"N	116°49'19.28"W	2766	47° 20.429'N	116° 49.321'W
Turn 6	Carlin Bay Airport	47°32'53.18"N	116°46'1.65"W	2690	47° 32.886'N	116° 46.028'W
Turn 7	Blue Creek Bay Bridge	47°37'41.36"N	116°40'44.86"W	2140	47° 37.689'N	116° 40.748'W
Turn 8	Windy Point	47°45'9.26"N	116°42'23.63"W	2240	47° 45.154'N	116° 42.394'W
Turn 9	Spades Mountain	47°47'45.14"N	116°34'6.33"W	5016	47° 47.752'N	116° 34.105'W
Turn 10	Water Tower	47°57'35.21"N	116°36'4.47"W	2427	47° 57.587'N	116° 36.075'W
Turn 11	Treeport Airport	47°58'41.61"N	116°47'31.66"W	2491	47° 58.694'N	116° 47.528'W
Turn 12 (Same as Turn 1)	Manufacturing Plant	47°45'34.60"N	116°58'50.19"W	2125	47° 45.577'N	116° 58.837'W
Finish	Southfield Fuel	47°46'9.97"N	116°49'14.36"W	2310	47° 46.166'N	116° 49.239'W

# START! (KCOE)

I am following Race # \_\_\_\_\_ (announced at briefing)

Altimeter setting \_\_\_\_\_ (announced at briefing)

Depart runway \_\_\_\_\_ (announced at briefing)

Freq 122.8



Depending on the wind we could be departing runway 23 or 5. The preferred runway will be 23. A flagger will have you taxi onto the runway, and then release each airplane for takeoff individually.

## RWY 23 PROCEDURE

If we take off on 23, we will do a straight out departure. Stay over the runway until you cross the departure end, then proceed on course. Climb to 2800 MSL (500 AGL) by the time you reach the first buildings, about a mile from the departure end of the runway. The flagger will wait until the aircraft in front of you has flown the length of the runway prior to release.

## RWY 5 PROCEDURE

If we take off on runway 5, climb on runway heading to 3100 MSL. After you have crossed US 95, begin a turn back toward the airport. Aim for the intersection of taxiways D and N. Fly parallel to the runway over taxiway N until you reach the runway threshold, and then proceed on course. The flagger will wait until the aircraft in front of you has begun the turn prior to release.

Race timing will begin approximately at the departure end of runway 23.

CHANGE FREQUENCY TO 122.9 UPON LEAVING VICINITY OF AIRPORT.

## TURN 1 MANUFACTURING PLANT

Turn 1 Minimum Altitude 2800 ft MSL (500 ft AGL)

Freq 122.9

Radio Call: Announce "**Race xx Turn 1**"

**Turn left to 175°**

Once established southbound, switch frequency to 122.9



# Turn 2 Farm

Freq 122.9

Radio Call: Announce ***"Race xx Turn 2"***

***Turn left to 166°***



## TURN 3 WILLARD AIRPORT - RWY 4 NUMBERS

Turn 3 Minimum Altitude 3,520 ft MSL (1,000 ft AGL)

Freq 122.9

Radio Call: Announce **"Race xx Turn 3"**

**Turn left to 113°**



## TURN 4 GRAIN ELEVATOR

Freq 122.9

Radio Call: Announce ***“Race xx Turn 4”***

***Turn Left to 011°***

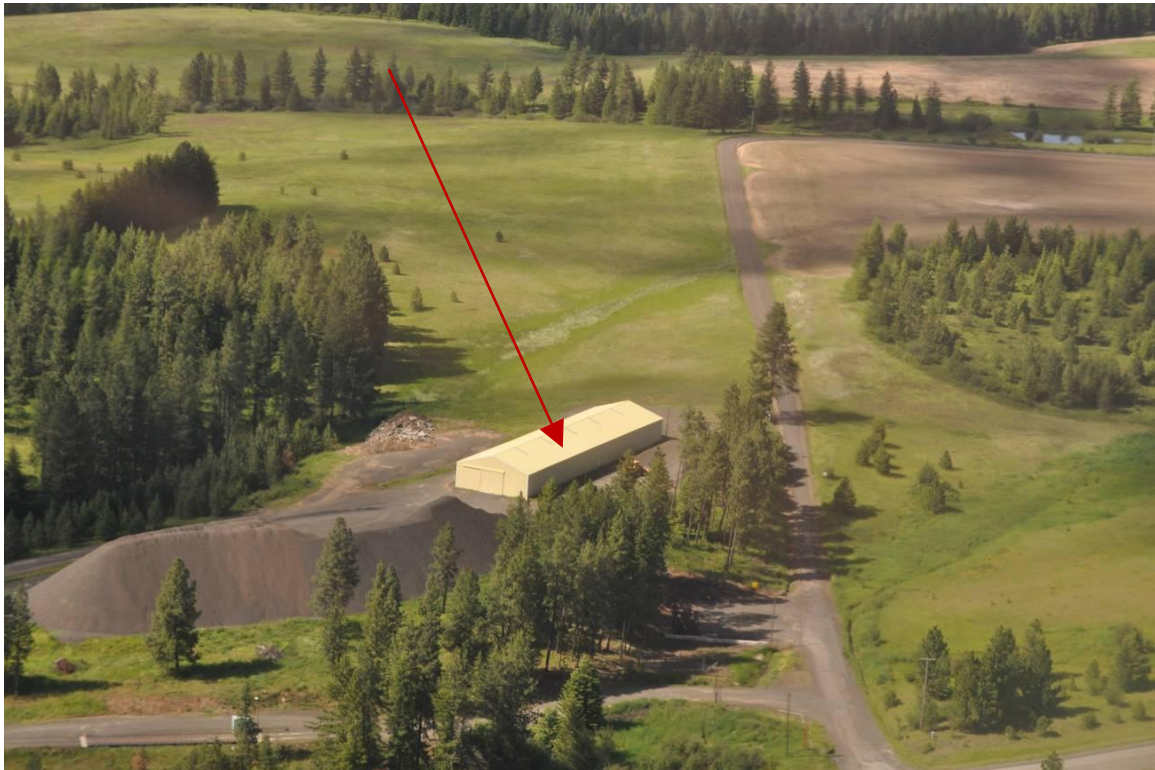


# TURN 5 COUNTY MAINTENANCE BUILDING

Freq 122.9

Radio Call: Announce ***"Race xx Turn 5"***

***Turn left to 355°***





# TURN 6 CARLIN BAY AIRPORT – AIRPORT SIGN

Turn 6 Minimum Altitude 2820 MSL (1000 AGL)

Freq 122.9

Radio Call: Announce ***“Race xx Turn 6”***

***Turn right to 022°***



## TURN 7 WEST END BLUE CREEK BAY BRIDGE

Minimum Altitude 3100

Freq 122.9

Radio Call: Announce "*Race xx Turn 7*"

***Turn left to 327°***



## TURN 8 HAYDEN LAKE – WINDY POINT

Freq 122.9

Radio Call: Announce ***“Race xx Turn 8”***

***Turn right to 045°***



## TURN 9 – SPADES MOUNTAIN FIRE LOOKOUT

Freq 122.9

Radio Call: Announce ***“Race xx Turn 9”***

***Turn left to 337°***



# TURN 10

Freq 122.9

Radio Call: Announce ***“Race xx Turn 10”***

***Turn Left to 263°***



## TURN 11 – TREEPORT AIRPARK – RED ROOF

Turn 11 Minimum Altitude 3500 MSL (1000 AGL)

Freq 122.9

Radio Call: Announce *“Race xx Turn 5”*

***Turn to 195°***



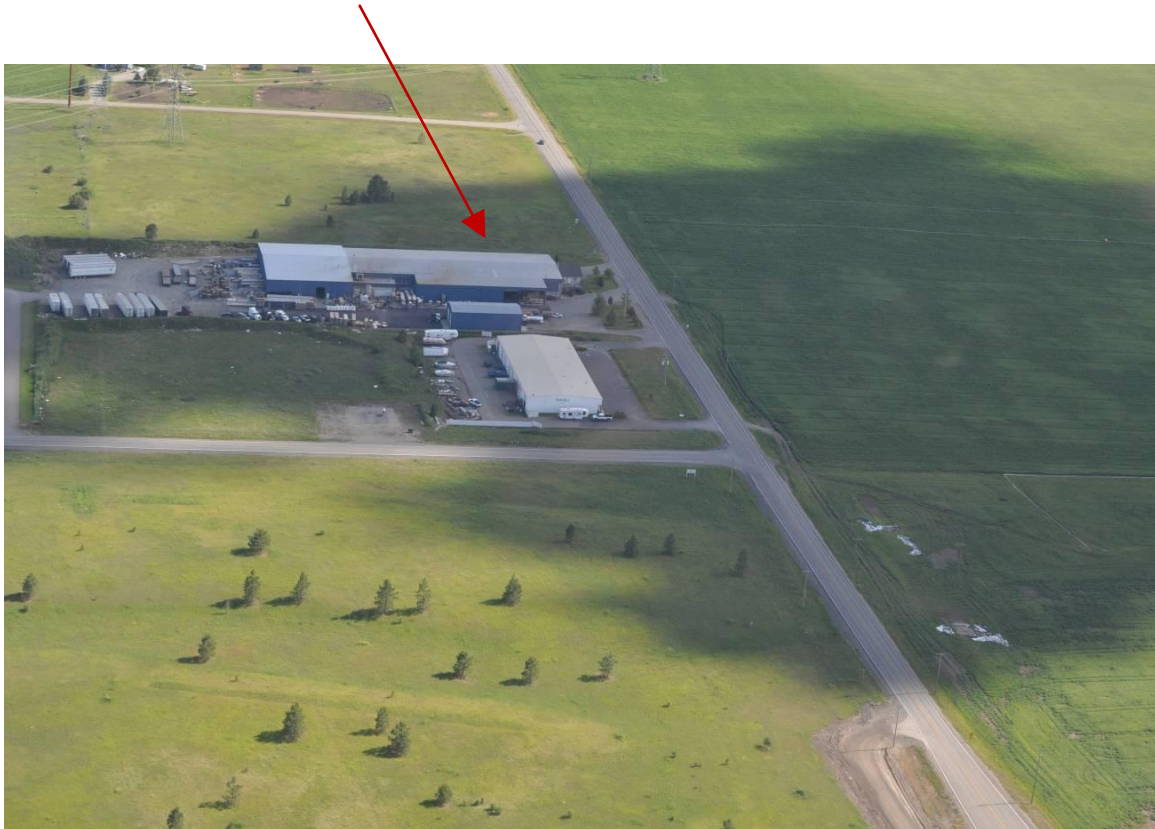
## TURN 12 – PLANT (BACK TO TURN 1)

Freq 122.9

Radio Call: Announce *“Race xx Turn 12”*

**Turn to 067°**

**Frequency change to 122.8**



## FINISH

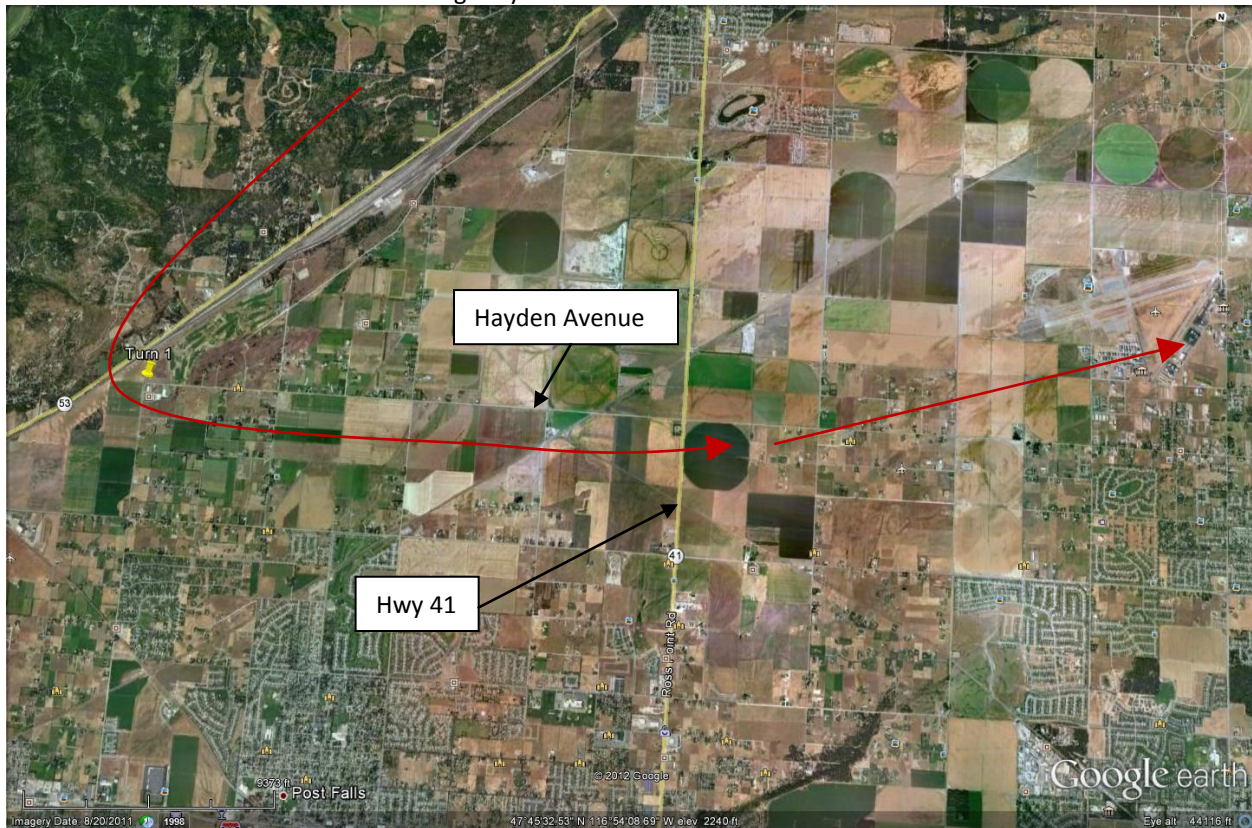
After turning inbound to KCOE fly parallel to Hayden Avenue until you reach highway 41. After crossing Hwy 41 your aim point is the Southfield Fuel gas pumps on the south side of the airport. This will put you in an extended downwind for Rwy 23. Be aware that there may be other traffic on downwind for 23; pass to the outside (right) with appropriate separation. Finish Altitude is 3100 MSL (pattern altitude.)

The race boss will notify you of any known traffic, but you are responsible for separation.

The finish line will be west of Taxiway D, the taxiway that is in front of the fuel pumps. After crossing Taxiway D, climb to 4100 MSL to cross above the RWY 1-19 pattern.

Freq 122.8

Radio Call: Announce 1 mile after crossing Hwy 41 **"Race xx Finish"**



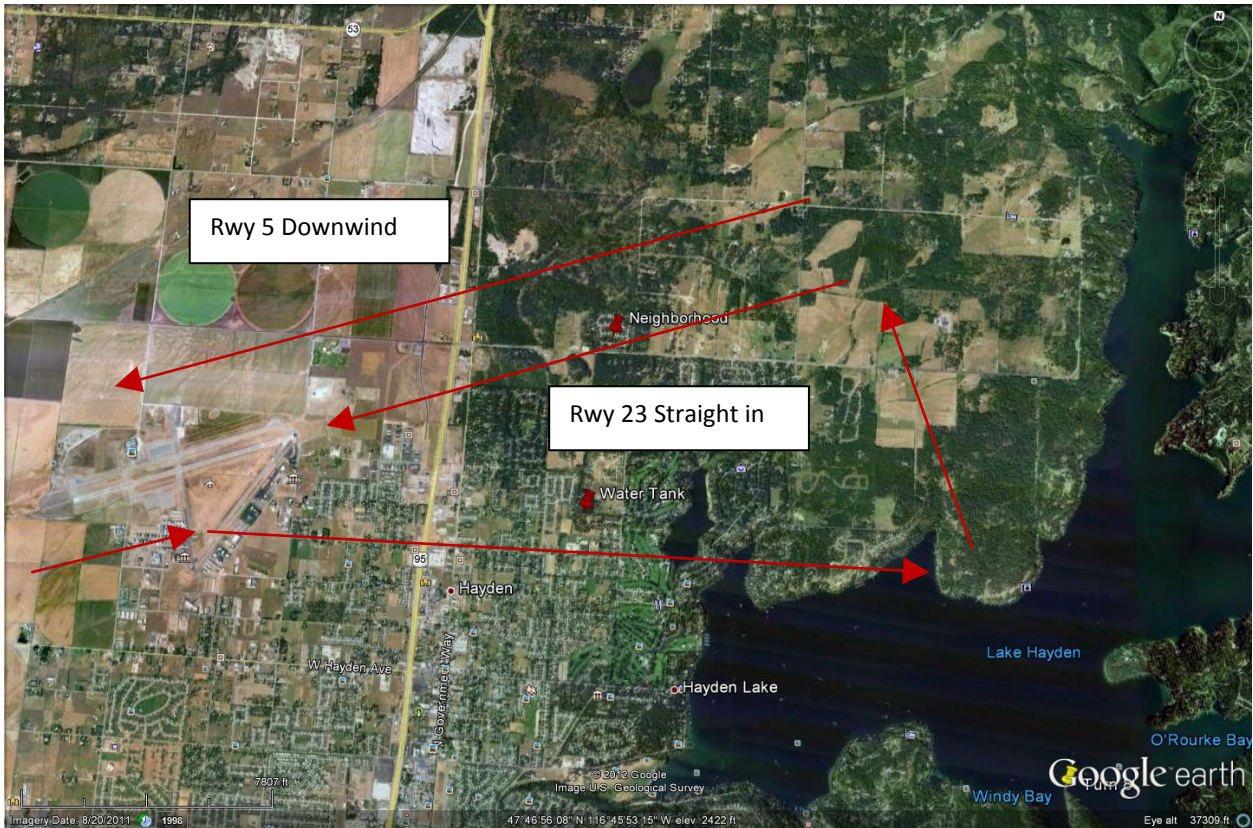




After finish Land Rwy \_\_\_\_\_ (Announced at briefing.)

After crossing Southfield fuel, climb to 4100 MSL and turn about 20° right for English point. Turn left for an extended base for Rwy 23 or crosswind for Rwy 5. Follow the airplane in front of you, and give plenty of spacing.

**Remember to watch for crossing traffic; Rwy 1-19 may be in use!**



# Emergency Procedures

## PRECAUTIONARY LANDING

FLY THE AIRCRAFT!

RADIO CALL: ANNOUNCE **"RACE XX ABORTING RACE, LANDING AT XXX AIRPORT"**

FOLLOW UP PHONE CALL TO \_\_\_\_\_ (ANNOUNCED AT BRIEFING)

RACING TO CONTINUE ON COURSE FOR THE REST OF THE FIELD.

## OFF AIRPORT LANDING

FLY THE AIRCRAFT UNTIL IT STOPS!

RADIO CALL IF POSSIBLE: ANNOUNCE **"MAYDAY, RACE XX, LOCATION, STATUS"**

Race is over if we have a MAYDAY. Remember who is ahead of you. If they call MAYDAY it is your responsibility to locate the aircraft, orbit overhead and provide communication on 122.8 if close enough to Coeur d'Alene. Stay with the downed aircraft if possible.

ORBITER RADIO CALL: ANNOUNCE **"KNOCK IT OFF"**

ALL OTHER RACERS MAINTAIN RADIO SILENCE AND RETURN TO COEUR D'ALENE.

## Race Rules and Safety Information

1. This is a fun outlet for those who like to go fast and improve the efficiency and performance of our airplanes. The intent is not to win at all costs. Compete in the nature of good sportsmanship. Any actions or attitudes in opposition to this will result in disqualification.
2. All aircraft will be started according to the speed stated on their entry forms or previous SARL race history with the fastest speeds launched first to minimize passing on the course.
3. Coeur d'Alene UNICOM is 122.8 and it will be used for the start and finish. The race frequency for all turns will be 122.9. Aircraft should transmit in the blind when approaching each turn point.
4. You will be racing against the clock, not another aircraft.
5. It is the pilot's responsibility to operate his/her aircraft at a speed that is safe and will not cause structural failure or loss of control.
6. Race officials will signal engine start and direct aircraft to the runway in fastest to slowest speed order. Be fueled and ready for engine start prior to mandatory briefing.
7. Racers must not descend below 1,000 ft AGL while in the pattern area of all airport turn points. Non-airport turn point altitudes are governed by the FARs. Heads up for non-race traffic! If traffic is in the pattern at a turn airport at the time you approach, you have a choice to swing wide of the traffic pattern or climb well above the pattern altitude.

*If you are observed passing through the airport traffic pattern at a low altitude you will be disqualified.*

8. All pilots: Check your maps to find the closest airports and dirt fields closest to the race course. **Know them for your safety.**
9. Keep your radio tuned to race frequency 122.9 during the race. If you have a problem, climb and communicate! All turn point ground observers have radios and will be there to help. 122.9 is the frequency for all three point airports, so listen up for traffic as you approach their area.
10. When you get within ½ mile of a turn point announce the turn, e.g. "Race Three Nine One Turn One". The finish call is particularly important to give the timers a heads up that you are approaching and who you are.
11. Make your calls crisp, clear and short, to keep radio traffic to a minimum.
12. Assuming that we are landing on Rwy 5 or 23 follow the procedure above. If for some reason you need to land on 1 or 19 stay clear of race traffic and fly normal patterns. Remember that Rwy 1 is right traffic, Rwy 19 is left.
13. If any event occurs so that a racer needs to pass the aircraft in front of them, they must pass on the outside of the course. If you are passing at turn 2 or turn 5 (the only right hand turns) you must pass on the outside of the turn. Do not try to pass in a turn unless you have sufficient closing speed. To pass in a turn you will be flying more air miles than the aircraft being overtaken. **The passing aircraft MUST maintain visual contact at all times!** Remember, the FARs state that the aircraft being passed has the right of way.
14. All FARs must be observed during the race. In particular, the minimum safe altitude FAR:  
**91.119 Minimum safe altitudes: General.**  
Except when necessary for takeoff or landing, no person may operate an aircraft below the following altitudes:  
*Anywhere.* An altitude allowing, if a power unit fails, an emergency landing without undue hazard to persons or property on the surface.  
*Over congested areas.* Over any congested area of a city, town, or settlement, or over any open air assembly of persons, an altitude of 1,000 feet above the highest obstacle within a horizontal radius of 2,000 feet of the aircraft.  
*Over other than congested areas.* An altitude of 500 feet above the surface, except over open water or sparsely populated areas. In those cases, the aircraft may not be operated closer than 500 feet to any person, vessel, vehicle, or structure.
15. HAVE FUN RUNNING THE RACE BUT KEEP IT SAFE! Any changes or additional details will be briefed before the race.

**Thank you for registering! If you need anything during your visit to Coeur d'Alene call one of these cell numbers. We will be providing transportation to and from your hotel; there will also be shuttles from the airport to downtown for the wooden boat show after the race. We hope you enjoy your stay.**

Brent Travis (208) 691-7472

Kristi Travis (208)-691-7473